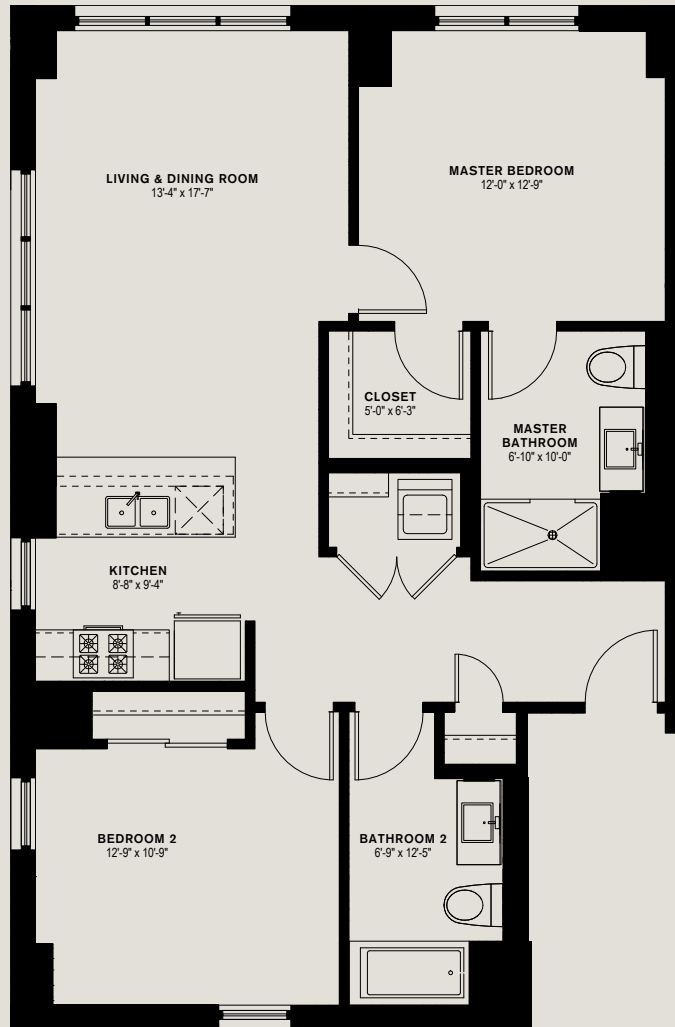


www.MadisonRacine.com

#2A

2 BED 2 BATH
1,097 SF



THOUGHTFULLY DESIGNED

- Pet-friendly homes
- Ample entry & walk-in closets *
- Yours and theirs closets *
- 9 foot tall ceilings
- Open floor plans
- High efficiency central heating and cooling
- Beautiful city skyline views *

GOURMET KITCHENS

- GE® stainless steel appliances including gas range, dishwasher, built-in microwave and ice maker
- Quartz kitchen countertops
- Leedo® contemporary kitchen cabinetry in dark or light finish with brushed chrome hardware
- Stainless steel sink & disposal
- Breakfast bar *

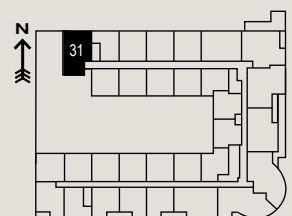
RELAXING BATHROOMS

- Sterling® deep soaker tub *
- Contemporary lighting
- Ceramic tiled bathrooms
- Designer accent tile
- Leedo® contemporary vanity with cultured marble wave sink
- Dual master bath sinks *

WELL APPOINTED

- In-unit washer and dryer
- Power outlets with built-in USB ports
- Shaw® luxury plank flooring throughout living space, kitchen and entry
- Track lighting
- Wired for cable and high-speed internet
- Window treatments

KEY PLAN



* Unique to this floor plan

All dimensions are approximate. Plans, views and pricing subject to change without notice.

